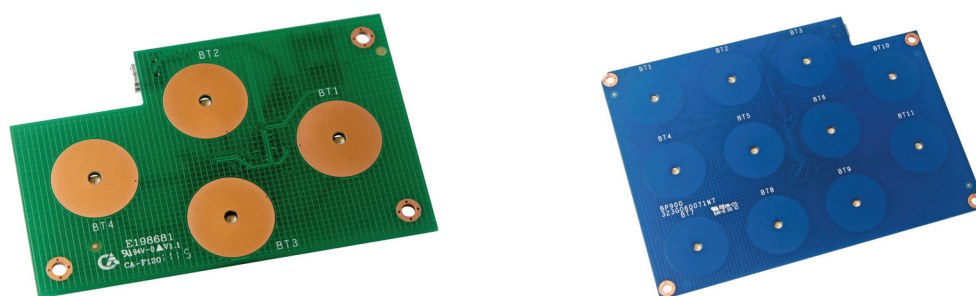


# BRIGHTSIGN BUTTON PANEL

## USB BUTTON PANEL FOR INTERACTIVE SIGNAGE

BrightSign's USB Button Panels easily adds interactivity to your digital signage. There are two button panels to choose from depending on the number of controls required, and both offer capacitive touch controls and LED lighting at the center of each button. The button panel and LED operations are simple to program using our free BrightAuthor software. The thin board design is easily integrated into custom displays and enclosures with graphics overlays to create the look you need.



### Features

- Capacitive touch controls including red LED lighting for each button
- Connects to and is powered by the USB port (USB cable not included)
- Easily to program button and LED operations using BrightAuthor
- Thin board design easily integrated into enclosures and displays
- 2 models available: 4 Button (BP200), 11 Button (BP900)

### Specifications

Features	BP200	BP900
Capacitive touch buttons	4	11
Red LED lights	4	11
Dimensions	101.6 mm (W) x 63.5 mm (D) x 11.1 mm (H) 4.0" (W) x 2.5" (D) x .44" (H)	139.7 mm (W) x 101.6 mm (D) x 11.1 mm (H) 5.5" (W) x 4.0" (D) x .44" (H)
Weight	46 grams or 1.62 oz	46 grams or 1.62 oz
Compatible BrightSign players	Any BrightSign model that has a USB port	
Connection	USB (cable not included)	